

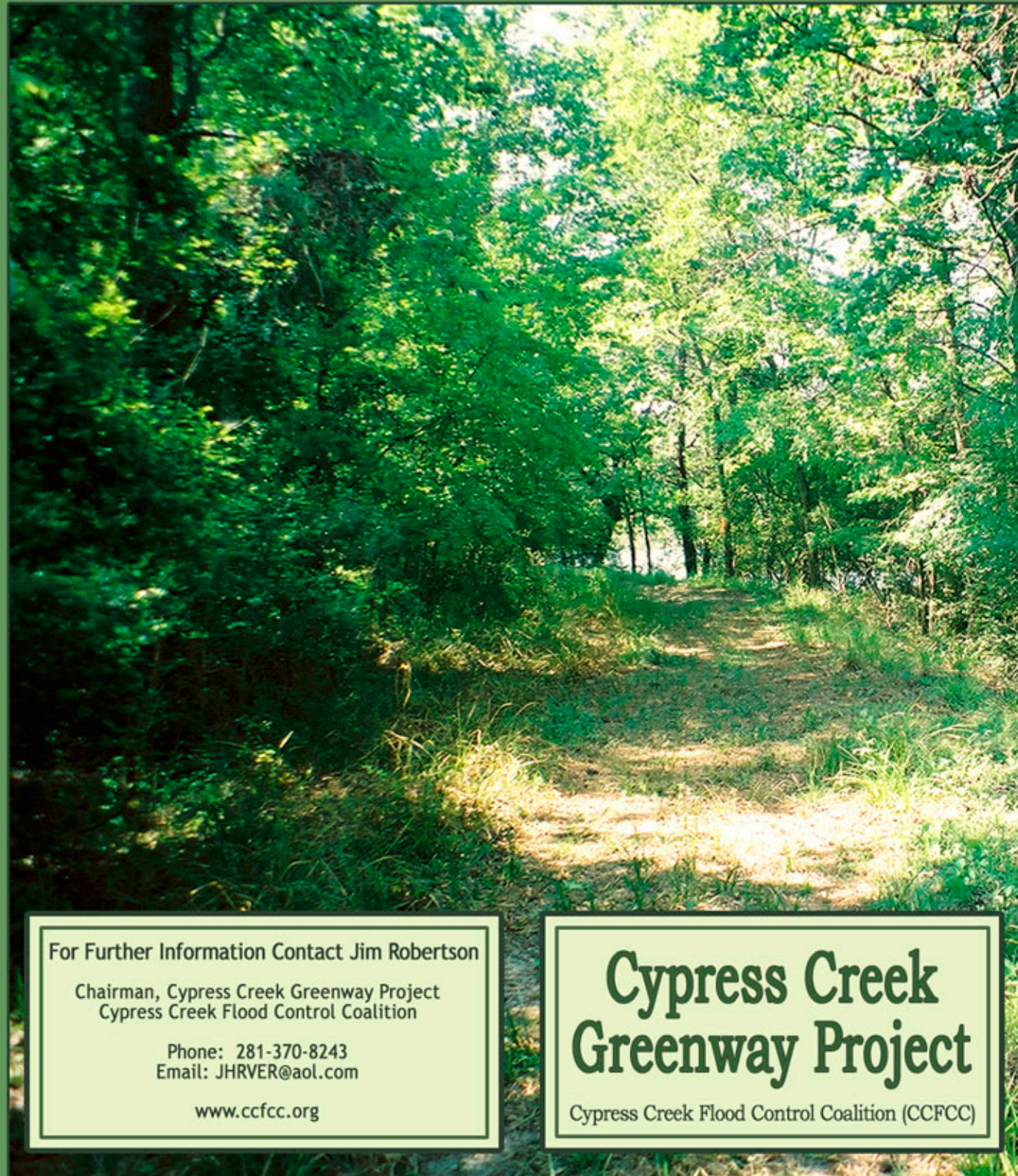
## Vision for the Cypress Creek Greenway

- Create a continuous linear greenbelt along Cypress Creek and Little Cypress Creek, stretching from west of US 290 to the east where it connects with the Spring Creek Greenway
- Use the Greenway to connect a series of existing and future anchor parks
- Develop a trail system along the entire length of the Greenway that would link to other trails in the Greenway parks and local communities

## Benefits of the Cypress Creek Greenway

The proposed Greenway will preserve a natural corridor along Cypress Creek and its major tributaries that will:

- Reduce flooding along Cypress Creek
- Provide recreational opportunities
- Preserve the existing natural habitat
- Develop awareness of the cultural and historical significance of Cypress Creek



For Further Information Contact Jim Robertson

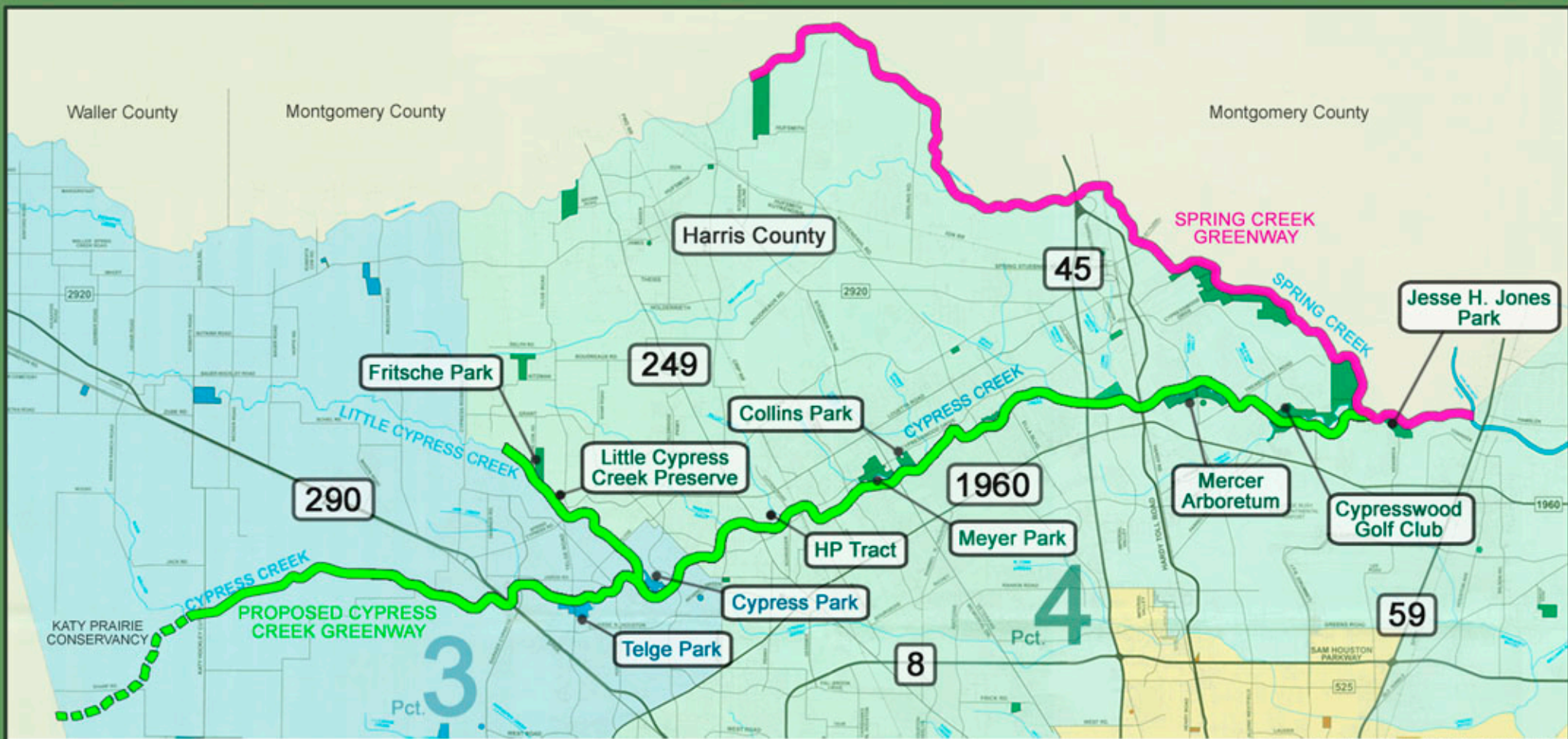
Chairman, Cypress Creek Greenway Project  
Cypress Creek Flood Control Coalition

Phone: 281-370-8243  
Email: JHRVER@aol.com

[www.ccfcc.org](http://www.ccfcc.org)

## Cypress Creek Greenway Project

Cypress Creek Flood Control Coalition (CCFCC)



BACKGROUND MAP COURTESY OF HC PCT. 3

# The Cypress Creek Greenway Project

Cypress Creek Flood Control Coalition (CCFCC)



- MAP LEGEND**
- █ PROPOSED CYPRESS CREEK GREENWAY PROJECT
  - █ SPRING CREEK GREENWAY PROJECT
  - █ PRECINCT 3 PARKS
  - █ PRECINCT 4 PARKS

10/05



Cypress Park



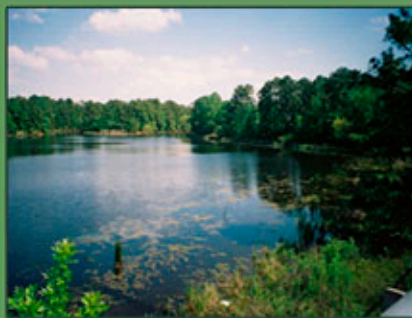
Near Cypresswood Drive



Oxbow Pond



Native Cypress Trees



HP Tract